



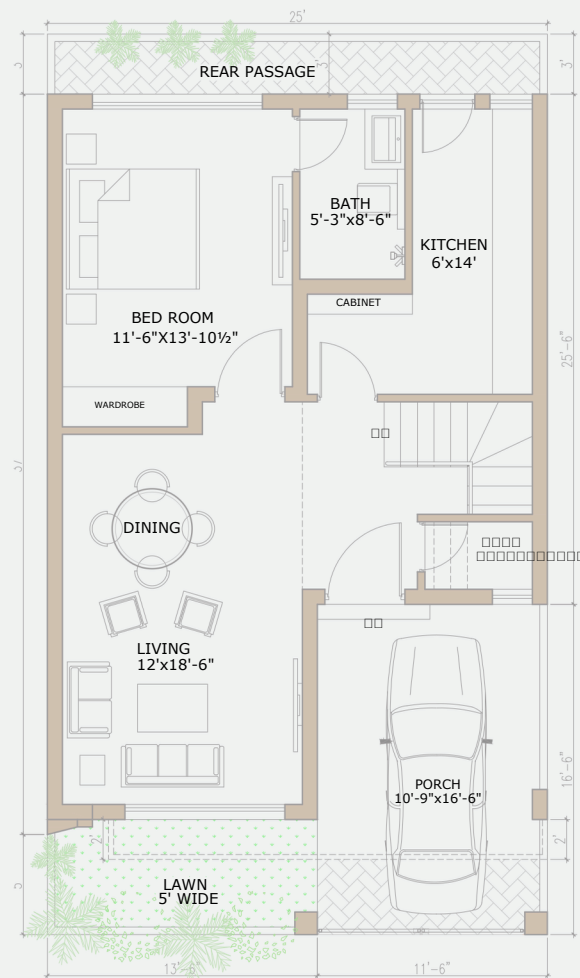
5 MARLA VILLAS

Roomi city is established with an aim of multiplying the investment with affordability, the 120 square yards residential plots are designated for those who seek moderate spaces with all the facilities. These plots are conveniently located near shopping, dining, and entertainment options. With the prime location and affordable price, these residential options are high in demand. Come join us with this journey of great choices.



RENDER
360

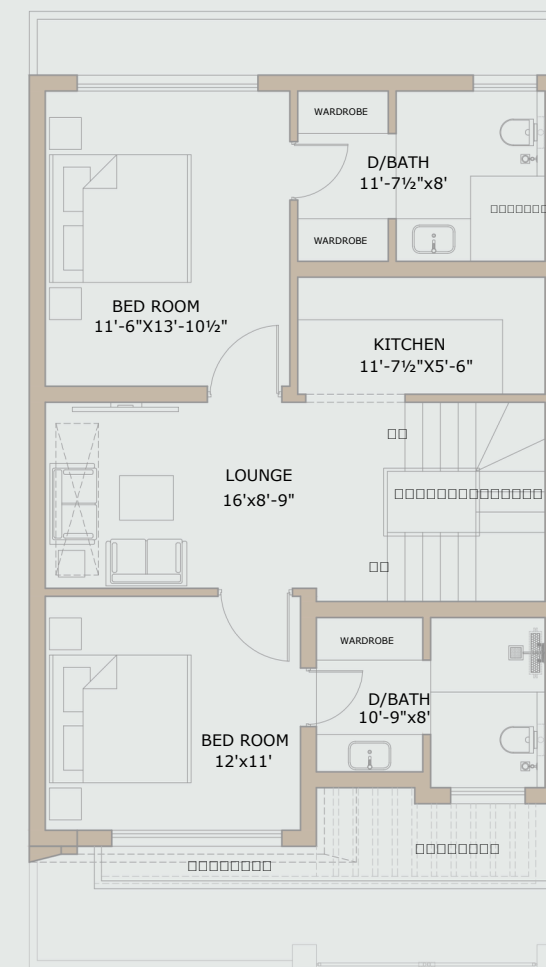
Our Focus | Your Success



5MARLA

GROUND FLOOR

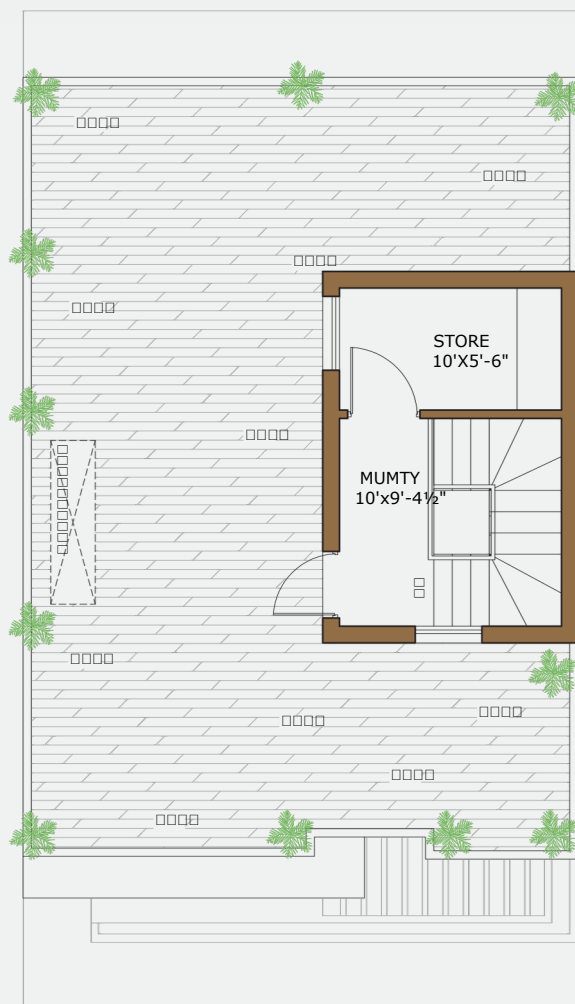
COVERED AREA: 974.97 SQFT



5MARLA

FIST FLOOR

COVERED AREA: 893.37 SQFT



5MARLA

ROOF TOP

COVERED AREA: 200 SQFT

